

# Huguenot Yacht Club New Rochelle/La Rochelle Mayors Cup Regatta

**Saturday August 15, 2015**

## SAILING INSTRUCTIONS

### 1 RULES

The regatta will be governed by the rules as defined in The Racing Rules of Sailing 2013-1016 (RRS) including US Sailing Prescriptions, except as modified herein.

### 2 NOTICES TO COMPETITORS

2.1 Notices to competitors and final scratch sheet will be posted on the event race page:

<http://www.yachtscoring.com/emenue.cfm?eID=1495>

2.2 Skippers are invited to a meeting which will take place at 1230 in the HYC clubhouse where any new notices will be delivered

2.3 New notices will also be announced by the race committee at 1400 on the Course VHF channel 71.

### 3 CHANGES TO SAILING INSTRUCTIONS

Any change to the sailing instructions will be posted on <http://www.yachtscoring.com/emenue.cfm?eID=1495> before 1300 on the day of the race, except that any change to the schedule of races will be posted by 2000 on the day before. Changes will be posted on the Yacht Scoring website.

### 4 SCHEDULE OF RACES

The first signal for the start will be made at 1430 hours, Saturday August 15th. One race is scheduled.

### 5 RACING AREA

The Marks Chart in the Sailing Instructions shows the location of the racing area and the approximate location of each Government Buoy. The starting / finishing area will be in the vicinity of green Can "1" NNE of Execution Rock.

### 6 COURSE

6.1 The course for each Class will be signaled by the Race Committee boat using black letters on a white board. Each

letter represents a mark as per SI 7.2 and Marks Chart

6.2 RED/GREEN BOARD – MARK ROUNDING DIRECTION

The RED or GREEN colored board below the course signals indicates the direction the marks are to be rounded. RED means that all marks are to be left to PORT. GREEN indicates that all marks are to be left to STARBOARD. If no color is displayed, then all marks are to be left to PORT.

6.3 TWICE AROUND – #2 BOARD

When the course signals are followed by a #2, the course is to be sailed twice– around. When a twice–around course is signaled, yachts shall complete the first lap by sailing through the Start/Finish line.

6.4 Sample Course Board

| Class 1 | Class 2–3 |  |
|---------|-----------|--|
| H       | D         | First Mark   |
| F       | E         | Second Mark  |
| G       | F         | Third Mark (then to finish line)   |
| 2       | 2         | Twice Around   |
| Red     | Red       | Color indicated rounding direction for all marks. Red to port, green to starboard. |

6.5 In a dying or light breeze, or in the event of an impending storm, the Race Committee may shorten the course as per RRS 32

6.6 Legs of the course will not be changed after the preparatory signal. This changes RRS 33.

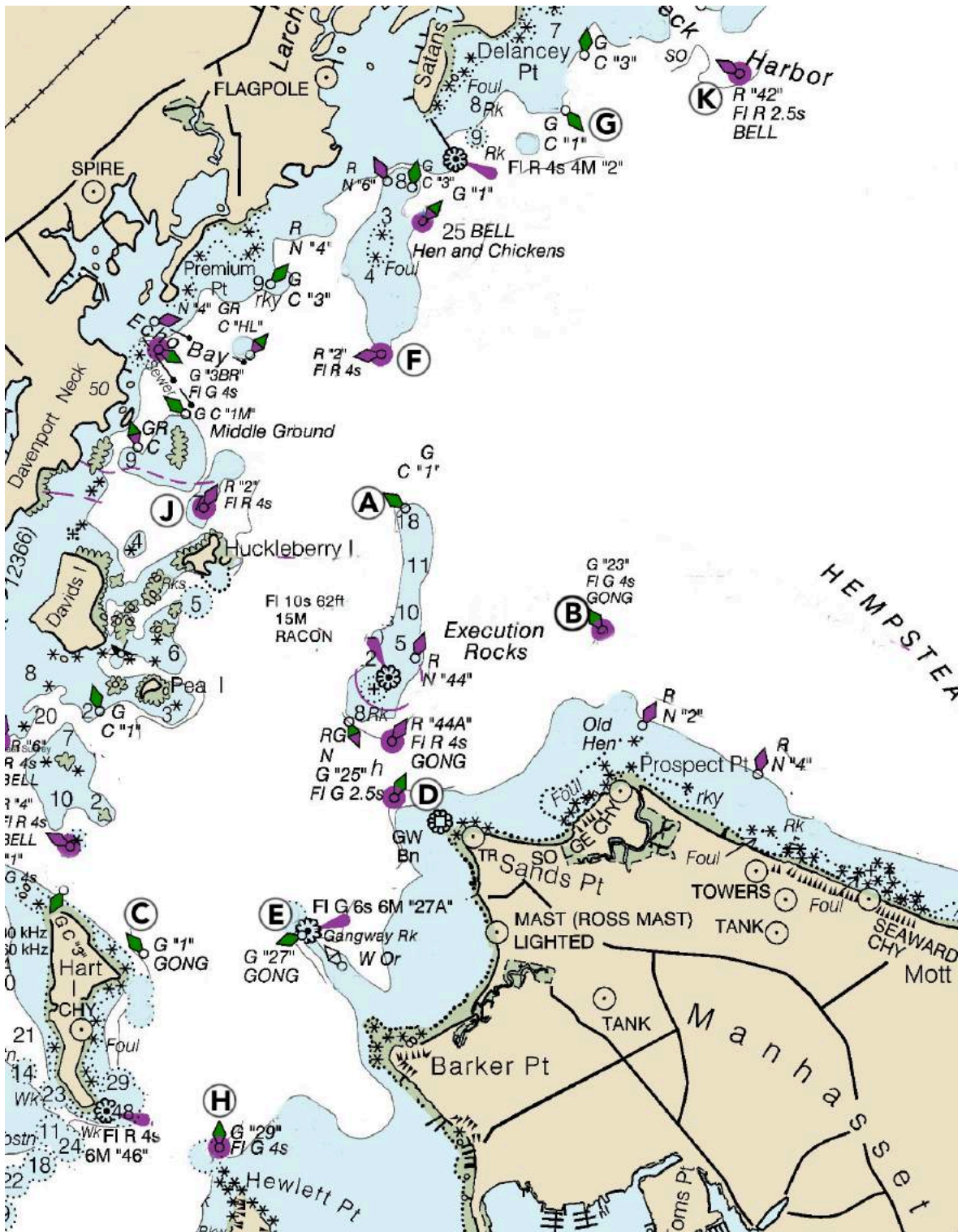
7 MARKS

7.1 The following buoys are rounding marks:

- A Can “1” 0.8 nm. North of Execution Rocks
- B Bell “23” 0.8 nm. East of Execution Rocks
- C Gong “1” 0.2 nm. East of Hart Island
- D Fl. G “25” 0.4 nm. of Northwest of Sands Point
- E Gong “27” Gangway Rock
- F Fl. R “2” 1.5 nm. North of Execution Rocks

- G "1" 0.5 nm. Northeast of Larchmont Breakwater
- H Fl. G "29" 0.2 nm. North of Hewlett Point
- J Fl. R "2" 0.1 nm. North of Huckleberry Island
- K Fl. R "42" 0.95 nm. SSW of Peningo Neck flagpole,  
(American Y. C. / Milton Pt.)
- L Inflatable mark located approximately .5 nm to leeward  
of the committee boat
- W Inflatable mark that will be set one mile to windward of  
the starting line. The inflatable can also be used as a  
starting mark. If the Committee Boat is set up next to  
the orange inflatable, cross the line so that the inflatable  
is passed on the same side as all other marks.

## 7.2 CHART OF ROUNDING MARKS



## MAGNETIC COURSES AND NAUTICAL MILE DISTANCES BETWEEN MARKS

| TO<br>FROM | A                           | B                          | C                           | D                           | E                           | F                           | G                           | H                           | J                          | K        |
|------------|-----------------------------|----------------------------|-----------------------------|-----------------------------|-----------------------------|-----------------------------|-----------------------------|-----------------------------|----------------------------|----------|
| <b>A</b>   | <b>A</b><br>136°<br>1.1 nm  | <b>B</b><br>224°<br>2.4 nm | <b>C</b><br>196°*<br>1.4 nm | <b>D</b><br>207°*<br>2.0 nm | <b>F</b><br>002°<br>0.7 nm  | <b>G</b><br>033°<br>2.0 nm  | <b>H</b><br>210°<br>3.1 nm  | <b>J</b><br>282°<br>0.9 nm  | <b>K</b><br>050°<br>2.5 nm |          |
| <b>B</b>   | 316°<br>1.1 nm              | <b>B</b><br>248°<br>2.6 nm | <b>D</b><br>244°<br>1.3 nm  | <b>E</b><br>238°<br>2.0 nm  | <b>F</b><br>334°<br>1.6 nm  | <b>G</b><br>008°<br>2.4 nm  | <b>H</b><br>230°*<br>3.0 nm | <b>J</b><br>300°<br>1.9 nm  | <b>K</b><br>027°<br>2.6 nm |          |
| <b>C</b>   | 044°<br>2.4 nm              | 068°<br>2.6 nm             | <b>C</b><br>072°<br>1.3 nm  | <b>E</b><br>098°<br>0.7 nm  | <b>F</b><br>035°<br>3.0 nm  | <b>G</b><br>039°<br>4.4 nm  | <b>H</b><br>173°<br>1.0 nm  | <b>J</b><br>021°*<br>2.1 nm | <b>K</b><br>047°<br>4.9 nm |          |
| <b>D</b>   | 016°*<br>1.4 nm             | 064°<br>1.3 nm             | 252°<br>1.3 nm              | <b>D</b><br>227°<br>0.8 nm  | <b>E</b><br>012°*<br>2.1 nm | <b>G</b><br>026°<br>3.3 nm  | <b>H</b><br>220°<br>1.8 nm  | <b>J</b><br>340°*<br>1.6 nm | <b>K</b><br>038°<br>3.7 nm |          |
| <b>E</b>   | 027°*<br>2.0 nm             | 058°<br>2.0 nm             | 278°<br>0.7 nm              | 047°<br>0.8 nm              | <b>E</b><br>021°<br>2.7 nm  | <b>F</b><br>030°*<br>4.0 nm | <b>H</b><br>215°<br>1.1 nm  | <b>J</b><br>000°*<br>2.1 nm | <b>K</b><br>040°<br>4.5 nm |          |
| <b>F</b>   | 182°<br>0.7 nm              | 154°<br>1.6 nm             | 215°<br>3.0 nm              | 192°*<br>2.1 nm             | 201°<br>2.7 nm              | <b>F</b><br>048°<br>1.4 nm  | <b>H</b><br>205°<br>3.8 nm  | <b>J</b><br>241°<br>1.1 nm  | <b>K</b><br>065°<br>2.1 nm |          |
| <b>G</b>   | 213°<br>2.0 nm              | 188°<br>2.4 nm             | 219°<br>4.4 nm              | 206°<br>3.3 nm              | 210°*<br>4.0 nm             | 228°<br>1.4 nm              | <b>G</b><br>211°*<br>5.4 nm | <b>J</b><br>234°<br>2.5 nm  | <b>K</b><br>093°<br>0.9 nm |          |
| <b>H</b>   | 030° <sub>n</sub><br>3.1 nm | 050°*<br>3.0 nm            | 353°<br>1.0 nm              | 040°<br>1.8 nm              | 035°<br>1.1 nm              | 025°<br>3.8 nm              | 031°*<br>5.4 nm             | <b>H</b><br>012°*<br>3.0 nm | <b>K</b><br>039°<br>5.5 nm |          |
| <b>J</b>   | 102°<br>0.9 nm              | 120°<br>1.9 nm             | 201°*<br>2.1 nm             | 160°*<br>1.6 nm             | 180°*<br>2.1 nm             | 061°<br>1.1 nm              | 054°<br>2.5 nm              | 192°*<br>3.0 nm             | <b>J</b><br>064°<br>3.2 nm |          |
| <b>K</b>   | 230°<br>2.5 nm              | 207°<br>2.6 nm             | 227°<br>4.9 nm              | 218°<br>3.7 nm              | 220°<br>4.5 nm              | 245°<br>2.1 nm              | 273°<br>0.9 nm              | 219°<br>5.5 nm              | 244°<br>3.2 nm             | <b>K</b> |

\* Asterisk denotes rhumb line course crosses obstructions, submerged rocks or dry land.

**This table is for reference only and is not to for navigation!**

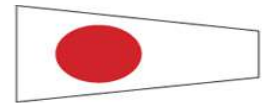
It is the responsibility of every competitor to be aware of the COLREGS and that they do not become a “privileged” vessel when participating in a race. This is especially true in meeting, crossing or overtaking situations with non-participant vessels and/or vessels constrained by their draft or ability to maneuver.

## 8 CLASSES AND CLASS FLAGS

- 8.1 Boats will be placed in classes at the discretion of the race committee, designated by numerals (1, 2, 3, 4, etc). Class flags will be numeral pennants. Each boat shall display the numeral pennant for its class on its backstay or, in the absence of a backstay, from its stern rail.
- 8.2 A listing of entrants by class will be available at the event page of <http://www.yachtscoring.com/emenu.cfm?eID=1495>

## 9 THE START

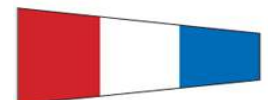
- 9.1 Races will be started as follows. Five minutes before the daily warning of the first class only, flag F will be displayed with one sound. One minute before the first class's initial warning, flag F will be removed with a sound signal. This changes RRS 26. Should the first start be postponed, the warning for the first class will be one minute after AP is lowered.
- 9.2 Class starts may be signaled at five-minute intervals by displaying a class flag at the start of the preceding class, in which case the start of the preceding class shall be the warning for the next class.
- 9.3 At the discretion of the race committee, class starts may be combined. The race committee will signal this type of start by displaying the numeral pennants of all classes sharing the start as the warning signal.
- 9.4 The starting line for all classes will be between a staff displaying an orange flag on the race committee signal boat and mark A or the orange inflatable mark.
- 9.5 The race committee signal boat may have one or more large inflatable buoys secured to it which shall be considered to be part of the committee boat for the purpose of RRS 31.
- 9.6 Boats whose warning signal has not been made shall keep clear of the starting area.
- 9.7 A boat that starts later than 10 minutes after her starting signal will be scored DNS.
- 9.8 Prior to the start, each boat shall come by the stern of the Race Committee boat to check in.



Class 1



Class 2



Class 3



Class 4



Class 5

## STARTING SEQUENCE

Races shall be started by using the following signals. Times shall be taken from the visual signals; the absence of a sound signal shall be disregarded.

| Signal             | Visual and Sound  | Minutes before starting signal |
|--------------------|---|--------------------------------|
| Attention Signal*  | Code Flag F hoisted with sound                                    | 10                             |
|                    | Code Flag F dropped with sound                                    | 6                              |
| Warning Signal     | Class Flag hoisted with sound                                     | 5                              |
| Preparatory Signal | Code Flag P hoisted with sound<br>(it accompanies the Class Flag) | 4                              |
|                    | Code Flag P dropped with sound                                    | 1                              |
| Starting Signal    | Class Flag Dropped with sound                                     | 0                              |

\* The "Attention Signal" shall only be sounded once, 10 minutes before the start of the first Class.

## 10 RECALLS

The race committee will attempt to identify recalled boats and to broadcast their sail numbers on the race course VHF channel. Failure of a boat to see or hear her recall notification, and the timing and order of such hail, shall not be cause for redress.

## 11 CHANGE OF COURSE BETWEEN STARTS

If the race committee changes the first mark following a postponement during a starting sequence, flag C will be displayed with short repeated sounds prior to the warning signal.

## 12 THE FINISH

12.1 The finishing line for all courses will be between a staff displaying an orange flag on an official boat and the finish mark.

12.2 If a course is shortened, the finish line will be between a staff displaying flag S on an official boat and a rounding mark. Race committee will make multiple sound signals to indicate shortened course and the committee will broadcast on the race course VHF channel that the course has been shortened.

12.3 Finishing yachts are advised to IDENTIFY THEMSELVES as they approach the finish line. Hailing on race course VHF channel is suggested. Making a note of yachts crossing the line ahead of

you and after you may be useful to you and/or other competitors in the event of discrepancies.

12.4 The finish line shall be crossed in the direction from the last mark rounded.

### 13 PENALTY SYSTEM – PENALTIES TAKEN AFTER A RACE

13.1 Any yacht that breaks a rule of Part 2 may elect to take a one-turn penalty. This changes rule 44.1.

13.2 After a race, a boat that may have broken a rule of Part 2 or Rule 31 while racing may take a Post-Race Penalty for the incident. The penalty shall be a Scoring Penalty as follows:

- (a) 20% of the number of starters, if taken before the protest time limit, or
- (b) 30% of the number of starters, if taken after the protest time limit but before the beginning of a hearing involving the incident.

A boat takes a Post-Race Penalty by informing the race Committee in writing when and where the incident occurred.

### 14 TIME LIMIT

14.1 If no boat in a class has finished within the time limit, the race for that class will be abandoned.

14.2 The time limit for the first finisher in each class will be 2-1/2 hours from the starting time of that class. Boats failing to finish within 3 hours will be scored “Time Limit Expired” (TLE) without a hearing. This changes RRS 35.

### 15 WITHDRAWAL

Any boat withdrawing before the start or retiring from a race shall notify the RC at the earliest possible opportunity on the race course VHF channel.

### 16 PROTESTS AND REQUESTS FOR REDRESS

16.1 To initiate a protest, the protested yacht must be notified by hailing “Protest!” A RED protest flag must be flown from your backstay immediately after the infraction, and carried until the finish line is crossed.

16.2 Immediately after finishing, a protesting yacht shall contact the Race Committee on the race course VHF channel to provide its sail number as well as the sail number of the yacht being protested. Protests must be filed before 1.5 hours after the last boat has finished.

16.3 Immediately after finishing, a yacht that accepted a One-Turn



Penalty shall contact the Race Committee on the race course VHF channel to provide its sail number as well as the sail number of the protesting yacht. This changes RRS 44.2

- 16.4 Protests and Requests for Redress shall be filed on standard US SAILING protest forms. Protest forms will be available at the Huguenot Yacht Club.
- 16.5 The Protest Hearing will take place immediately after the race, at Huguenot Yacht Club. Failure to show on the part of either party within 1.5 hours after the last boat has finished will constitute a default (subject to RRS 63.3)
- 16.6 If you have been in a collision, you are REQUIRED to come to Huguenot YC immediately after the race for a protest hearing.

## 17 SCORING

- 17.1 Each class will be scored using current PHRF handicaps provided by YRALIS. "Spinnaker W/L Ratings" will be used for Spinnaker Classes and "No-Spinnaker W/L Ratings" will be used for Non-Spinnaker Classes. Boats without a PHRF Certificate will be issued a Mock Certificate for your type of boat using base data only. This certificate is valid only for this race and is not subject to appeal.
- 17.2 Weight limits will not be in effect, except that any boat sailing with a "light crew" rating shall sail as rated.
- 17.3 Races will be scored by the finish position for level and one-design classes or by using time-on-time scoring (ToT) based on a Time Correction Factor (TCF) derived from a yacht's PHRF time-on-distance (ToD) certificate rating. The specific TCF will be determined based on the median rating of the boats entered and on the weather conditions forecast for the day's race. The final ToT will be posted on the Yachtscoring website by 1200 on the day of the race as well as communicated to the skippers at the skippers meeting.

## 18 RADIO COMMUNICATION

- 18.1 The Race Committee shall communicate over VHF 71 and participants should monitor this channel prior to departure for updates from the Race Committee and continue until back at their homeport. This is because the Race Committee may be looking for boats that have not finished.
- 18.2 Except in an emergency, a boat shall neither make radio transmissions while racing nor receive radio communications not available to all boats. This restriction also applies to mobile phones.

|   |  |   |  |   |  |   |                           |   |                           |
|---|--|---|--|---|--|---|---------------------------|---|---------------------------|
| A |  | J |  | S |  | Y |                           | 8 |                           |
| B |  | K |  | T |  | Z |                           | 9 |                           |
| C |  | L |  | U |  | 1 |                           | 0 |                           |
| D |  | M |  | V |  | 2 |                           |   | Answering Pennant         |
| E |  | N |  |   |  | 3 |                           |   | 1st Substitute (Repeater) |
| F |  | O |  |   |  | 4 |                           |   | 2nd Substitute (Repeater) |
| G |  | P |  | 5 |  |   | 3rd Substitute (Repeater) |   |                           |
| H |  | Q |  | 6 |  |   |                           |   |                           |
| I |  | R |  | 7 |  |   |                           |   |                           |
|   |  |   |  |   |  |   |                           |   |                           |

**COMMON RACE SIGNALS**

|  |  |   |
|--|--|---|
| The Class Flag (numeral or letter flag) is the Warning Signal: raised 5 min. before start and lowered at the start.  | Postponement: Lowered one minute before new warning signal.  | Rule 30.1 is in effect at the start (Around the Ends Rule). See 30.1 for details.             |
| P flag is the Preparatory Signal: Raised 4 minutes before start & lowered 1 minute before start.   | Change of Course: Position of next mark has been changed.  | Any boat over the line within a minute of the start receives a 20% scoring penalty. See 30.2. |
| Class flag stays up from the warning signal to the starting signal. At the start, the Class Flag is dropped. The warning signal for succeeding classes shall be made with or after the starting signal. Read regatta's Sailing Instructions. See Rule 26 for more information. | Shortened Course: Finish between this boat and nearest mark.   | Any boat over the starting line within a minute of the start is disqualified. See Rule 30.3.  |
| X Flag: Indicates one or more boats started early. Flag is lowered once all boats have started correctly.  | Boat or object with this flag replaces a missing mark.   | Race abandoned; return to starting area.  |
| General Recall. Flag lowered one minute before new prep.   | Ashore: Indicates that a notice to competitors has been posted. Afloat: Come within hail or follow me. | Flags N over A: All races for the day are abandoned. Go home.                                 |
|  | All competitors are required to wear personal buoyancy.  | Can One Race Committee  |

**19 PRIZES**

19.1 Prizes will be awarded to the boats with the best finishes in each class.

**20 DISCLAIMER OF LIABILITY / RESPONSIBILITY FOR SAFETY**

20.1 By participating in this event and any related activity sponsored or undertaken by Huguenot Yacht Club (HYC), the owner, helmsman and each crew member agree: that they understand that sailing is an activity that has an inherent risk of serious bodily injury (including permanent disability, paralysis and death by drowning or otherwise), property damage and other economic loss; that the safety of the boat and her crew and the decision whether or not to start or continue to race is solely their responsibility and at their own risk, see RRS 4 "Decision to Race"; that HYC and its officers, trustees, members, committees, employees, agents and sponsors will not be responsible for damage to any boat or other property, or to any participant, including injury or death; and that each of them releases and waives all claims which he or she, or any heir, representative, successor or assignee, may have against HYC and its officers, trustees, members, committees, employees, agents and/or sponsors, arising out of or in any way connected with participation in such race or activity. Assistance, if any, from the race committee or other HYC vessels, or patrol boats, from any personnel manning them, is at the risk of the participant.

## 21 OTHER DOCUMENTS

21.1 Forms, documents, scratch sheets and results related to this event are located at <http://www.yachtscoring.com/emenu.cfm?eID=1495>.

## 22 CONTACT INFORMATION

Huguenot Yacht Club, Harbor Lane West, New Rochelle, NY. 10805  
(914) 636-6300  
email: [racing@huguenotyc.com](mailto:racing@huguenotyc.com)  
[www.huguenotyc.com](http://www.huguenotyc.com)